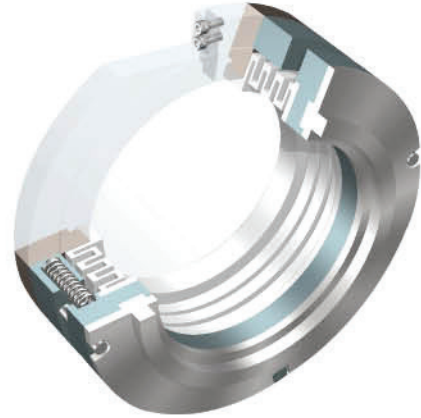


- OUTSIDE MOUNTED
- NO DYNAMIC ELASTOMERS
- HYDRAULICALLY BALANCED
- REPLACEABLE SEAL FACE



APPLICATIONS :

- CORROSIVE LIQUIDS
- CLEAR ACIDS
- CORROSIVE SALT SOLUTIONS



LIMITING PARAMETERS

PRESSURE
UPTO 6 BAR

TEMPERATURE
- 45°C TO 120°C

SPEED
14 m/sec

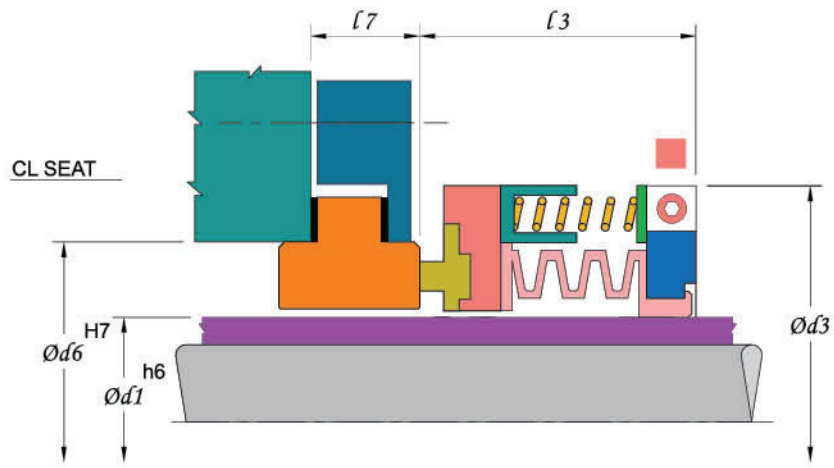
MATERIALS

BELLOWS	METAL PARTS / SPRINGS
PTFE + GFT COMPOSITE	SS316 HAST-C ALLOY-20

FACE COMBINATIONS	
ROTARY	STATIONARY
GFT	CERAMIC
CARBON	CERAMIC, SiC
SiC	CERAMIC, SiC

ELASTOMERS
PTFE , GFT

Registered Trademarks : Viton - Du Pont, Hastelloy - Haynes International, Inc. Kalrez - Du Pont Aflas - Asahi Glass Co.



INCH SIZES

SIZE CODE	d_1	d_3	d_6	l_3	l_7
0254	25.40	57.2	42.9	32.5	13.6
0285	28.57	60.3	44.5	32.5	14.3
0317	31.75	63.5	51.0	32.5	20.6
0349	34.92	66.7	51.0	32.5	20.6
0381	38.10	71.4	57.1	32.5	20.6
0412	41.27	76.2	62.0	32.5	20.6
0444	44.45	79.4	63.5	32.5	20.6
0476	47.62	82.6	69.9	32.5	20.6
0508	50.80	96.9	73.0	44.5	20.6

METRIC SIZES

SIZE CODE	d_1	d_3	d_6	l_3	l_7
0250	25.00	57.2	42.9	32.5	13.6
0280	28.00	60.3	44.5	32.5	14.3
0300	30.00	63.5	51.0	32.5	20.6
0320	32.00	63.5	51.0	32.5	20.6
0330	33.00	66.7	51.0	32.5	20.6
0350	35.00	66.7	51.0	32.5	20.6
0380	38.00	71.4	57.1	32.5	20.6
0400	40.00	76.2	62.0	32.5	20.6
0430	43.00	79.4	63.5	32.5	20.6
0450	45.00	79.4	63.5	32.5	20.6
0480	48.00	82.6	69.9	32.5	20.6
0500	50.00	96.9	73.0	44.5	20.6

DIMENSIONS FOR HIGHER SIZES AVAILABLE ON REQUEST

ALL DIMENSIONS IN MM



Due to continuous improvement specifications & dimensions may change without prior notice