

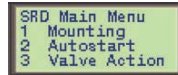
# Intelligent Valve Positioner SRD991



## Operation



## Configuration



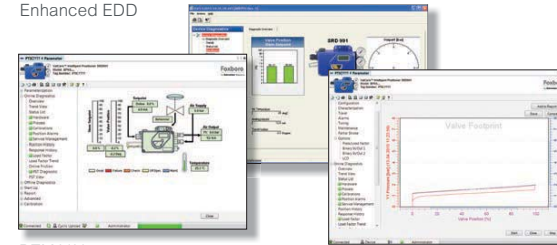
## Diagnosis report



## SRD991 – Intelligent Valve Control – Intrinsically Safe (Ex ia)

- Easy to operate, menu-driven graphical LCD
- Multilingual full text display, visible also with cover closed
- All parameters can be configured locally by push buttons
- Advanced Diagnostics for valve Predictive Maintenance
- Premium Diagnostics for valve footprint, on-line friction
- Suitable for safety applications up to SIL 3
- Partial Stroke Test for emergency shutdown applications
- HART-Protocol
- PROFIBUS-PA
- FOUNDATION Fieldbus H1 with PID, AO, 4xDI, DO, IS, OS, AI, MAI function blocks and LAS functionality
- Easy mounting to all linear and rotary actuators
- Options:
  - Housing in stainless steel
  - Limit switches and position transmitter
  - Gauge manifolds and volume boosters
  - Pressure sensors for supply air and outputs
  - WirelessHART module

## Enhanced EDD



DTM VALcare

Positioner Report created with VALcare DTM

## Example for mounting on rotary actuator



The SRD991 provides a start-up in two steps only and a multilingual full-text graphic LCD for configuration and operation.

The SRD991 provides enhanced applications and methods to analyze recorded stroke data.

All the diagnostic features can be easily configured and displayed by the Positioner DTM (VALcare). Moreover, the Positioner DTM enables the operator to edit a complete "health" report of the valve with all data for configuration and diagnostics.

The SRD991 also has the capability to control a Partial Stroke Test that offers operators a tool to identify the trouble-proof function of ESD (Emergency Shut Down) valves.

## Technical Data

Advanced Diagnostics	• Autostart	• Custom Characterization
	• Autodiagnostic	• Alarm Management
	• Alarm Output for Switching (with Optionboard)	• Position History
	• Status List acc. NE107	• Response History
Premium Diagnostics	• On Line Friction	• Stepping Signature
	• Ramping Signature	• Sensitivity Signature
	• Valve Footprint	• PST
	• PST Predictive Maintenance	
SRD991 without Communication	Setpoint 4-20 mA	
	Load 300 Ohm	
SRD991 with Communication	HART	Setpoint 4-20 mA
		Load 420 Ohm
	PROFIBUS PA and FOUNDATION Fieldbus H1	Base current 10.5 mA ± 0.5 mA + FISCO
		FDE (Fault Disconnection Electronic)
		Certified DTMs for HART, Profibus PA and FF H1
Display	Multilingual Graphical LCD with full text display	
	Mechanical Indicator (Standard)	
Air Supply	1.4 to 6 bar (20 to 90 psig), or	
	1.4 to 7 bar (20 to 105 psig) with "spool valve"	
Stroke Range	8 to 260 mm (0.3 to 10.2 in) with standard lever	
Angle of Rotation	Up to 95 degree angle	
Protection Class	IP 66 or NEMA 4X	
Electrical Classification	ATEX	Intrinsic safety II 2 G Ex ia IIC T4 / T6
		intrinsic safety for dust II 1 D Ex ia D 20
	FM and CSA	Intrinsic safety Class I, Div. 1, Groups A, B, C, D
Electrical Connection	M20 x 1.5 or 1/2-14 NPT (others with Adapter AD...)	
Pneumatic Connection	G1/4 or 1/4-18 NPT	
Ambient Temperature	-40 to 80°C (-40 to 176°F)	
Weight	1.7 kg / 3.7 lbs (double acting: 2 kg / 4.4 lbs)	
Options (plug & play)	Inductive Limit Switches (2- or 3-wire)	
	Mechanical Switches (Micro Switches)	
	Position Transmitter (4-20 mA)	
	Binary Inputs or Binary Outputs or	
	Binary Inputs/Outputs dedicated to SIS logic solvers*	
	External potentiometer (*e.g. Triconex®)	
Attachment to linear actuators	acc. IEC 534 part 6 (NAMUR) and VDI/VDE 3847	
to rotary actuators	acc. VDI/VDE 3845 and VDI/VDE 3847	
to any other linear or rotary actuator by means of	extensive attachment kit offering	

