

# Universal Positioner SRD960



## Operation



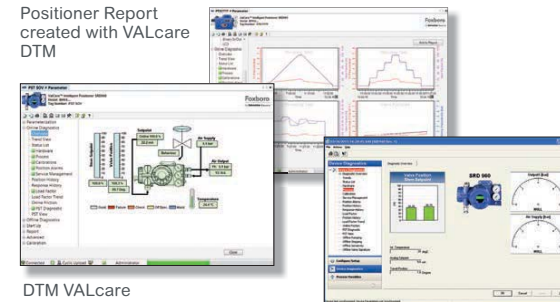
## Configuration



## Diagnosis report



## Positioner Report created with VALcare DTM



DTM VALcare

Enhanced EDD

## Example for mounting on rotary actuators



## SRD960 – Intelligent Valve Control – Explosion Proof (Ex d)

- Easy to operate, menu-driven with graphical backlit LCD
- Multilingual full text display, backlit for easy reading
- All parameters can be configured locally by push buttons
- Advanced Diagnostics for valve Predictive Maintenance
- Premium Diagnostics for valve footprint, on-line friction
- Certified for safety applications up to SIL 3
- Partial Stroke Test (PST) for emergency shutdown applications
- ATEX, FM and CSA approval for Ex d - "flameproof" / "explosion proof"
- HART Protocol
- PROFIBUS-PA
- FOUNDATION™ Fieldbus H1 with PID, AO, 4xDI, DO, IS, OS, AI, MAI function blocks and LAS functionality
- Easy mounting to all linear and rotary actuators
- Options:
  - Limit switches or position transmitter
  - Integrated gauges and volume boosters
  - Pressure sensors for supply air and outputs
  - WirelessHART module, explosion proof

The SRD960 provides start-up in two steps only and a multilingual full text graphical backlit LCD for configuration and operation.

The SRD960 provides enhanced applications and methods to analyze recorded stroke data.

All the diagnostic features can be easily configured and displayed by the Positioner DTM (VALcare™). The Positioner Device Type Manager (DTM) enables the operator to edit a complete 'health' report of the valve with all data for configuration and diagnostics.

The SRD960 also has the capability to control a Partial Stroke Test (PST) which gives operators a tool to identify the trouble-proof function of ESD (Emergency Shut Down) valves.

## Technical Data

Advanced Diagnostics	<ul style="list-style-type: none"> <li>• Autostart</li> <li>• Autodiagnostic</li> <li>• Alarm Output for Switching (with Optionboard)</li> <li>• Status List acc. NE107</li> <li>• Response History</li> <li>• On Line Friction</li> <li>• Ramping Signature</li> <li>• Valve Footprint</li> <li>• PST Predictive Maintenance</li> </ul>	<ul style="list-style-type: none"> <li>• Custom Characterization</li> <li>• Alarm Management</li> <li>• Position History</li> <li>• Stepping Signature</li> <li>• Sensitivity Signature</li> <li>• PST</li> </ul>
Premium Diagnostics		
SRD960 with Communication	HART Setpoint 4-20 mA Load 420 Ohm PROFIBUS PA and FOUNDATION Fieldbus H1 Base current 10.5 mA ± 0.5 mA + FISCO FDE (Fault Disconnection Electronic) Certified DTMs for HART, Profibus PA and FF H1	
Display	Multilingual Graphical LCD with full text display	
Air Supply	1.4 to 6 bar (20 to 90 psig), or 1.4 to 7 bar (20 to 105 psig) with "spool valve"	
Stroke Range	8 to 260 mm (0.3 to 10.2 in)	
Angle of Rotation	Up to 95 degree angle	
Protection Class	IP 66 or NEMA 4X	
Electrical Classification	ATEX flameproof II 2 G Ex d T4 / T6 FM and CSA explosion proof Cl. I, Div. 1, Groups A, B, C, D	
Electrical Connection	M20 x 1.5 or 1/2-14 NPT (others with Adapter AD...)	
Pneumatic Connection	G1/4 or 1/4-18 NPT	
Ambient Temperature	-40 to 80°C (-40 to 176°F)	
Weight	2.7 kg / 5.9 lbs (double acting: 3 kg / 6.6 lbs)	
Options	Inductive Limit Switches (2- or 3-wire) Mechanical Switches (Micro Switches) Position Transmitter (4-20 mA) Binary Inputs or Binary Outputs or Binary Inputs/Outputs dedicated to SIS logic solvers* External potentiometer (*e.g. Triconex®)	
Attachment to linear actuators	acc. IEC 534 part 6 (NAMUR) and VDI/VDE 3847	
to rotary actuators	acc. VDI/VDE 3845 and VDI/VDE 3847	
to any other linear or rotary actuator by means of extensive attachment kit offering		

