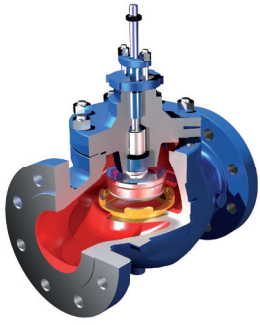


Control Valves

BLAKEBOROUGH®



General Service

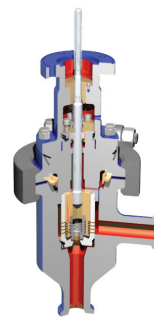
Features

- Top and bottom guided
- Contour trim
- Low pressure applications

Class - ASME 150-600
Sizes - 1 1/2" - 6" (40mm-150mm)

Choke, Rotary Gate & Steam Conditioning Valves

BLAKEBOROUGH®



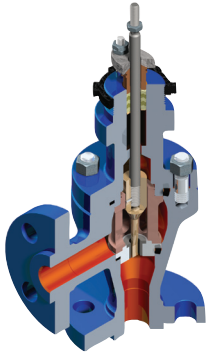
Choke

Features

- Stable cage guiding
- Erosion resistance
- Tungsten carbide trims
- High pressure drop control
- API designs available

Class - ASME 150-4500
Sizes - 1" - 24" (25mm-600mm)

BLAKEBOROUGH®



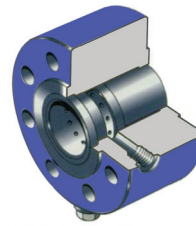
Small Size Control

Features

- Low Cv control
- High pressure drop
- Cage & seat guided
- Suitable for all applications
- Multi-stage trims available

Class - ASME 150-4500
Sizes - 1/2" - 1" (15mm-25mm)

BLAKEBOROUGH®



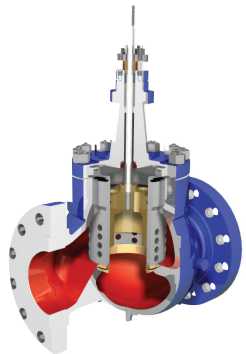
Mini Desuperheater

Features

- Steam conditioning for small pipe sizes
- Separate water control

Class - ASME 150-2500
Sizes - 1/2" - 12" (15mm-300mm)

BLAKEBOROUGH®



Cage Guided Control

Features

- Stable cage guiding
- Single & multi-stage trims
- Used to eliminate effects of cavitation, flashing, noise & medium pressure drops

Class - ASME 150-4500
Sizes - 1 1/2" - 36" (40mm-900mm)

BLAKEBOROUGH®



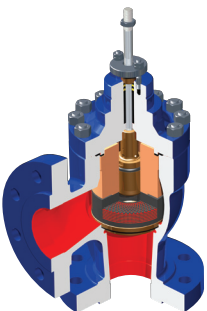
Pipe Desuperheater

Features

- Integrated water control
- Atomising nozzles
- Water is injected along the pipe centreline

Class - ASME 150-2500
Sizes - 6" - 36" (150mm-900mm)

BLAKEBOROUGH®



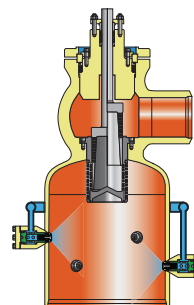
X-Stream™ Severe Service

Features

- Stable cage guiding
- Trim velocity control
- Patented flow path
- Used in high pressure drop applications

Class - ASME 150-4500
Sizes - 2" - 24" (50mm-600mm)

BLAKEBOROUGH®



Turbine Bypass

Features

- Pressure reducing & desuperheating as an integral unit
- Noise & stable pressure control
- Water atomising nozzles

Class - ASME 150-4500
Sizes - 1 1/2" - 36" (40mm-900mm)

BLAKEBOROUGH®



Double Seated Control

Features

- Top and bottom guided
- Contour trim
- Double seated valve for high capacities
- Ideal for mixing applications

Class - ASME 150-1500
Sizes - 1 1/2" - 36" (40mm-900mm)